

# Gelli Plate Printing

## Rectangular

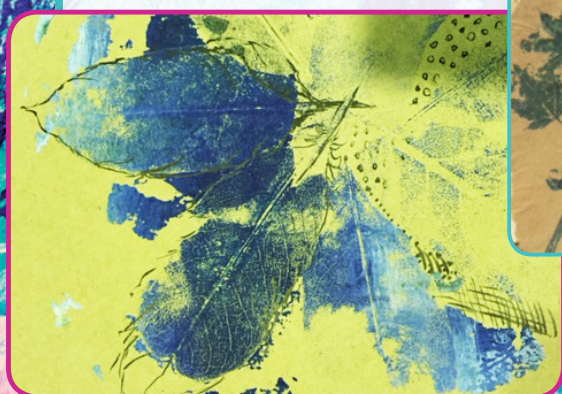
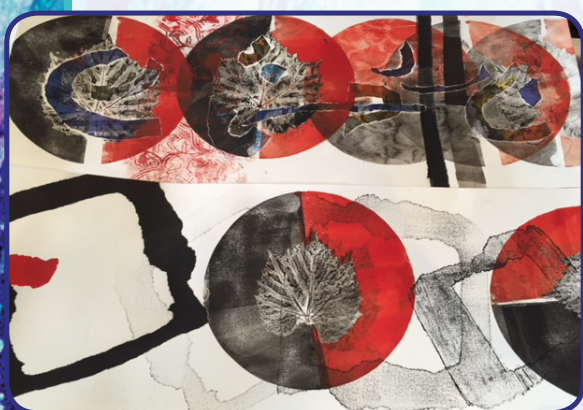
3 x 5" (76 x 127mm)	Each	<b>GAP0305</b>
5 x 7" (127 x 178mm)	Each	<b>GAP0507</b>
8 x 10" (203 x 254mm)	Each	<b>GAP0810</b>
9 x 12" (230 x 300mm)	Each	<b>GAP0912</b>
12 x 14" (305 x 356mm)	Each	<b>GAP1214</b>
16 x 20" (400 x 500mm)	Each	<b>GAP1620</b>

## Classpacks

5 x 7"	Box 11	<b>GACP0507</b>
8 x 10"	Box 11	<b>GACP0810</b>
<b>Square</b>		
6 x 6" (152 x 152mm)	Each	<b>GAP0606</b>
<b>Round</b>		
8" diameter (203mm dia.)	Each	<b>GAP0800</b>

## Ways to Monoprint

- Remove clear film from plate
- Squeeze acrylic paint or block printing ink onto an inking plate adding a few drops of Jo Sonja Gel Retarder to make the ink/paint more transparent.
- Roll paint/ink onto the gelli plate leaving a thin layer
- Create designs by pressing textured objects into colour or placing objects onto plate. For example, Cedar canyon rubbing plates, skeleton leaves, string, stencils, paper shapes, bubble wrap, jean pockets, stencils.
- Lay paper onto painted surface and gently rub over with hands to transfer colour.
- Remove paper from printing plate to reveal print.
- Remove objects from printing plate and wipe plate with water and paper towel.
- Once dry, you can reprint over the paper many times by repeating the above steps.



**S&S**

Creativity unlimited™

Ph: 1300 731 529

[www.creativityunlimited.com.au](http://www.creativityunlimited.com.au)